

Wednesday 17th June 2020

**L.1 – To identify how the different film techniques
affect the reader**



How does the lighting affect the mood in this shot?

All of these features affect how the viewer feels and what they understand from the scenes...

Sound

Symbol

Sequence

Setting

Story



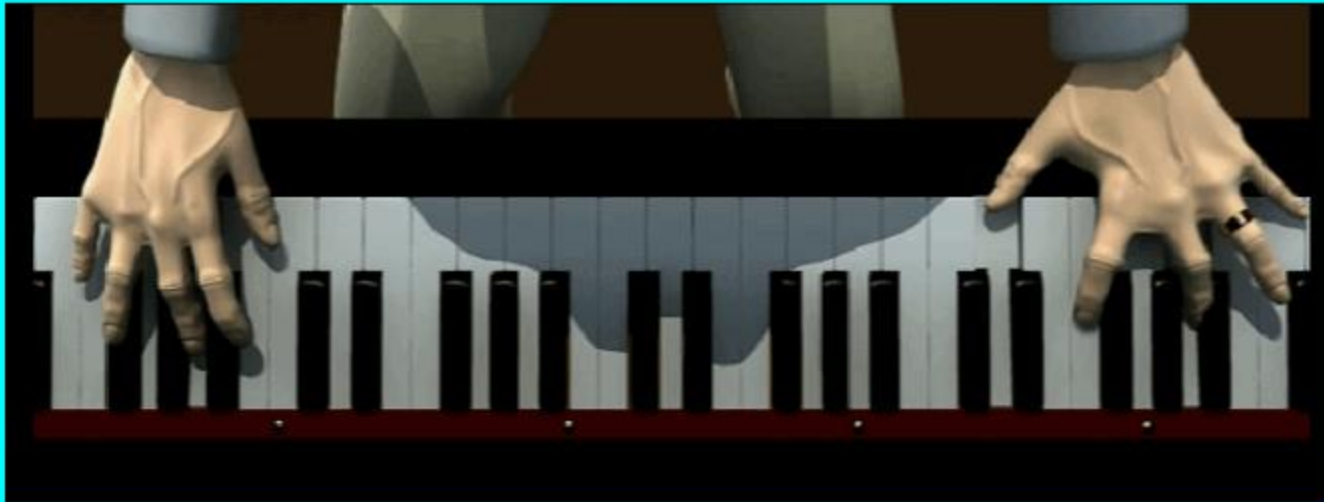
Character

Camera

Colour

Composition

What clues can we gather about this character from this shot?



Why do you think that the film maker chose to use an overhead shot?

Why did the film maker use a close up shot?



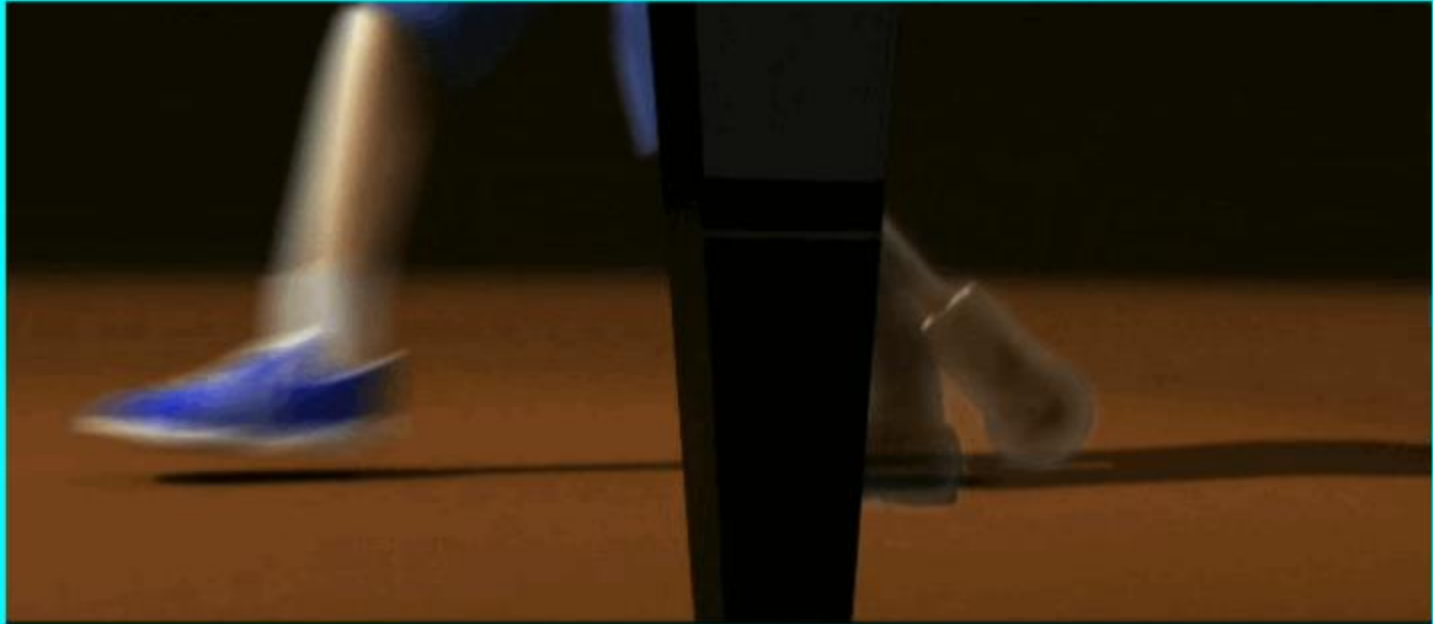
What does this shot tell us?

Why is colour so important in this shot?



**What do you think this shot
is trying to tell you?**

Why is this such an important shot?



This shot has been very carefully composed
- explain why.



What does this tell us about the two characters?



Why has the film maker chosen to shoot this from behind the characters?

What do these shots make you think
and feel?



Do you think this is what the film maker wanted?

TASK

Choose three of the scenes you have looked at in more detail and write a short paragraph on each commenting on how the techniques used affect you as a viewer.

In your paragraphs use these questions to help:

- How the shot makes you think?
- How the shot makes you feel?
- Is there a reason for the angle of the shot?
- Does the shot offer the viewer any clues about the film?
- How has colour been used in this shot, why?
- Have they used a close up/far away shot? Why?
- How is the shot composed? Why?