

Monday 15<sup>th</sup> June 2020

LI: To interpret parables



# The Parable of the sower

Today we are going to read another Parable of the kingdom of heaven from Matthew, Chapter 13 Verses 18-23.



<https://www.youtube.com/watch?v=Tb7bvF5Ucrk>

## The Parable of the Sower (Matthew 13: 18-23)

13 On that day Jesus went out of the house and was sitting by the sea. <sup>2</sup> Such large crowds gathered around him that he got into a boat and sat down, while the whole crowd stood on the shore.

<sup>3</sup> Then he told them many things in parables, saying, "Consider the sower who went out to sow. <sup>4</sup> As he sowed, some seed fell along the path, and the birds came and devoured them.

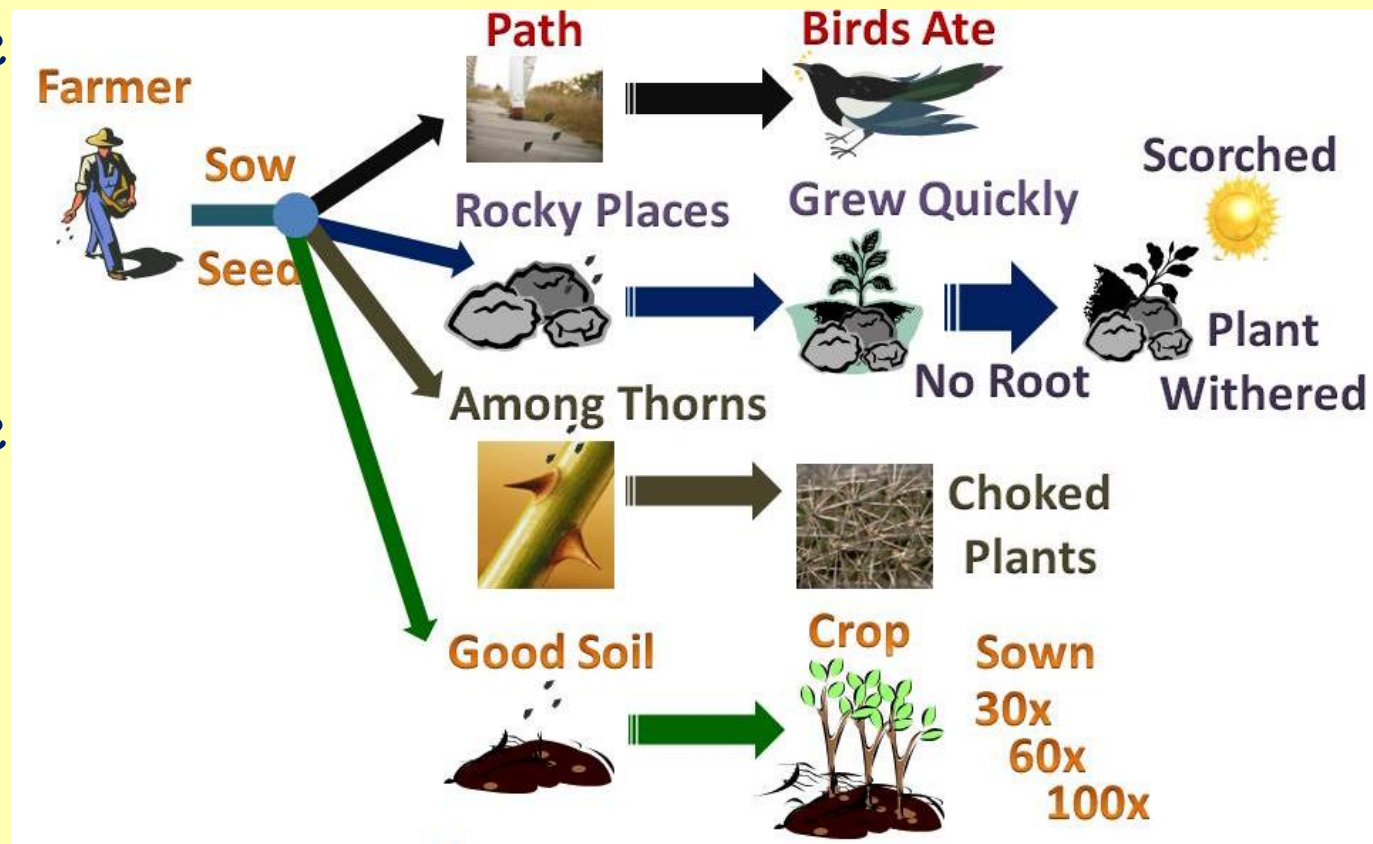
<sup>5</sup> Other seed fell on rocky ground where it didn't have much soil, and it grew up quickly since the soil wasn't deep. <sup>6</sup> But when the sun came up, it was scorched, and since it had no root, it withered away. <sup>7</sup> Other seed fell among thorns, and the thorns came up and choked it. <sup>8</sup> Still other seed fell on good ground and produced fruit: some a hundred, some sixty, and some thirty times what was sown. <sup>9</sup> Let anyone who has ears listen."

# Quick Questions

1. What is the name of this story?

2. What is the reference (Gospel name chapter and verses)?

3. What is the kingdom being compared to?



# What's what in this parable?



Seeds



Sower



Planting



Path and rocky ground



Weeds



Birds



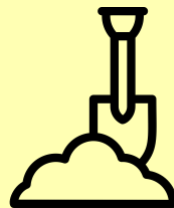
Dying plants



Good soil



Healthy plants



# What do things symbolise in this parable?

## Match the picture to the words.



People who live bad lives



People who live good lives



Bad people who do not have positive values



Bad people who do not have positive values



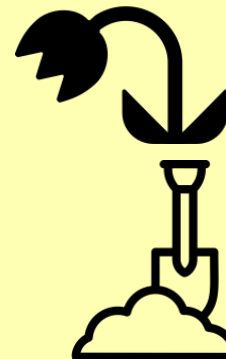
Difficult places for people to start in life



God giving us life and putting us in different places around the world



God



People of the world at the start of their lives.

Good places to grow up

# Match the picture to the word.

## ANSWERS



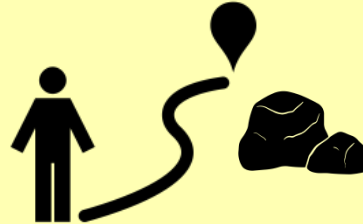
People of  
the world



God



God giving us life  
and putting us in  
different places  
around the world



Difficult places  
for people to  
start in life



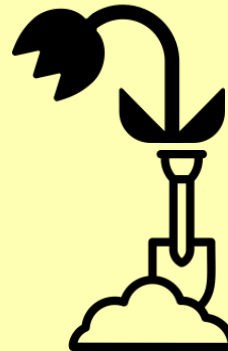
Bad people who  
do not have  
positive values



Bad people who  
do not have  
positive values

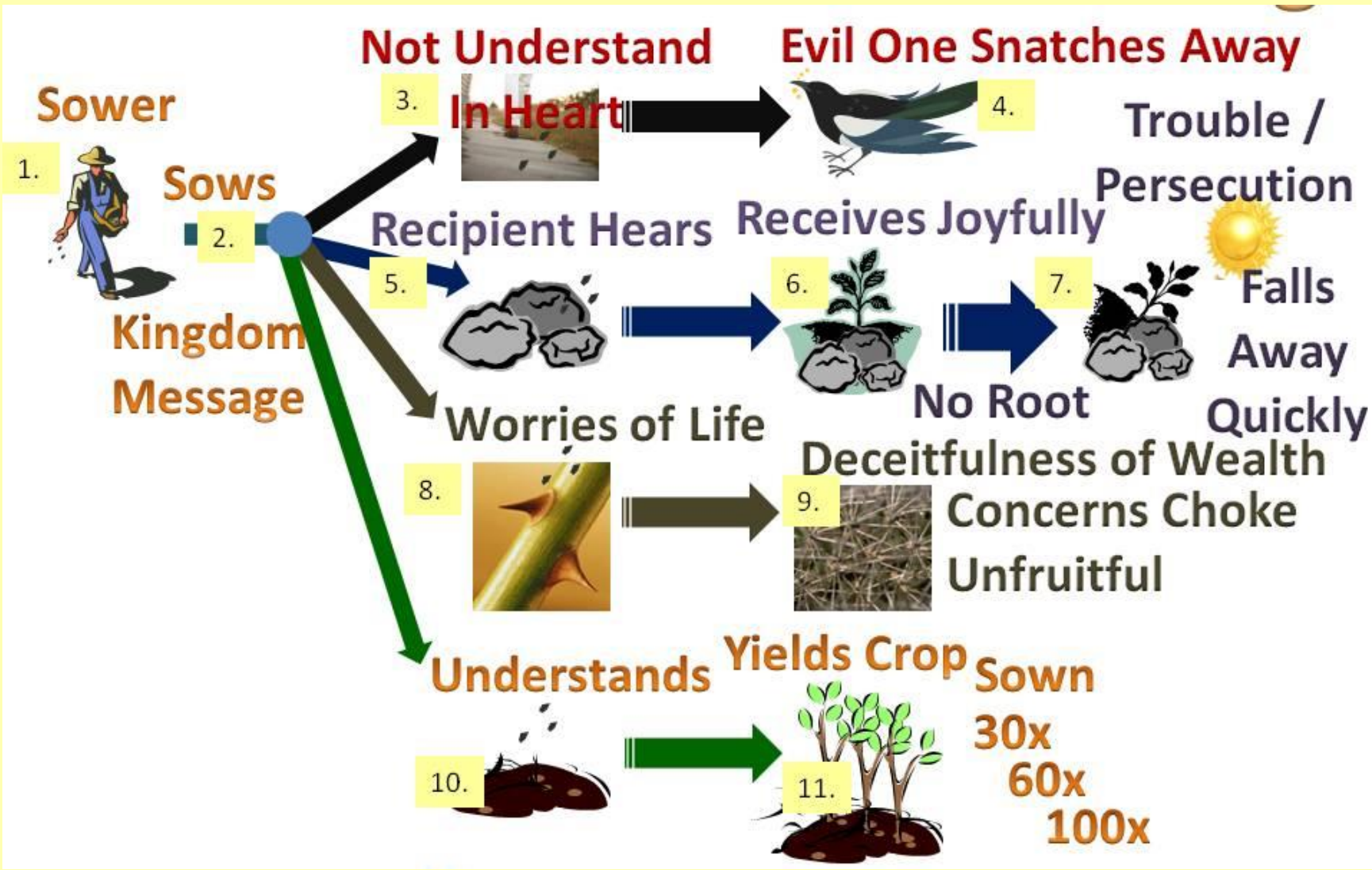


People who  
live good  
lives



People who  
live bad lives

Good places to  
grow up





# Task

Draw out a 'Y' Chart and place the following titles in each section.

- What happens to seeds that fall on rocky ground and why? (in the story and the symbols for real life)
- What happens to seeds that fall on thorny ground and why? (in the story and the symbols for real life)
- What happens to seeds that fall on good soil and why? (in the story and the symbols for real life)

# 'Y' Chart

